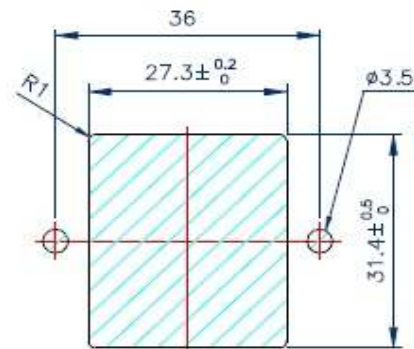
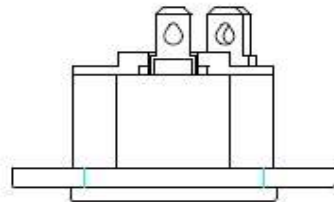


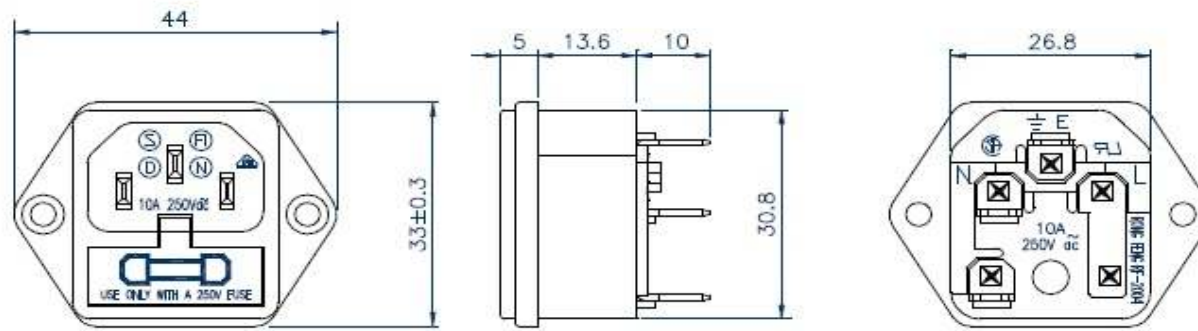
# POWER INLET 5x20MM FUSE HOLDER


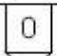


## JR-101-1F

STANDARD: IEC 320-1 C14  
STANDARD: IEC 320-1 C14  
RATING : 10A 250V AC  
APPROVALS: UL/CSA/VDE/DEMKO/  
NEMKO/SEMKO/FIMKO



PANEL CUTOUT DIMENSION TABLE



	6.3	
	6.3	
JR-101-1F	4.8	
	4.0	
	2.8	