



榮豐工業股份有限公司
RONG FENG INDUSTRIAL CO., LTD.

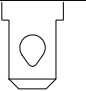
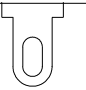
180 ChengKung 3rd. Rd., Nantou City, Taiwan 540
Tel : 886-49-2252421/5
Fax: 886-49-2253647
http://rongfeng.com.tw
e-mail:rongfeng@tcts.seed.net.tw

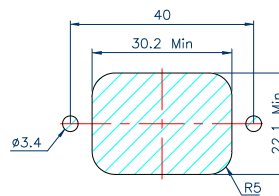
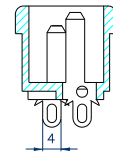
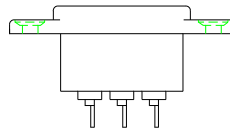
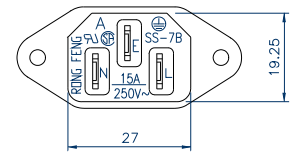
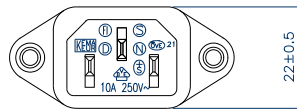
AC SOCKET



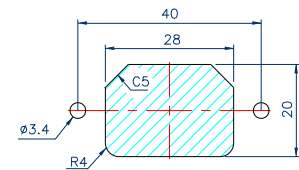
SS-7B-VDE

STANNDAAARD: IEC 320 C14
RATING : 15A 250V AC
APPROVALS : UL/CSA
RATING : 10A 250V AC
APPROVALS : VDE/SEMKO/CCC/KTL/BSMI

	X	MODE
SS-7B-VDE-	4.8	
	4.0	



Mounting inlet flange at back of cover.



Mounting inlet flange in front of cover.